
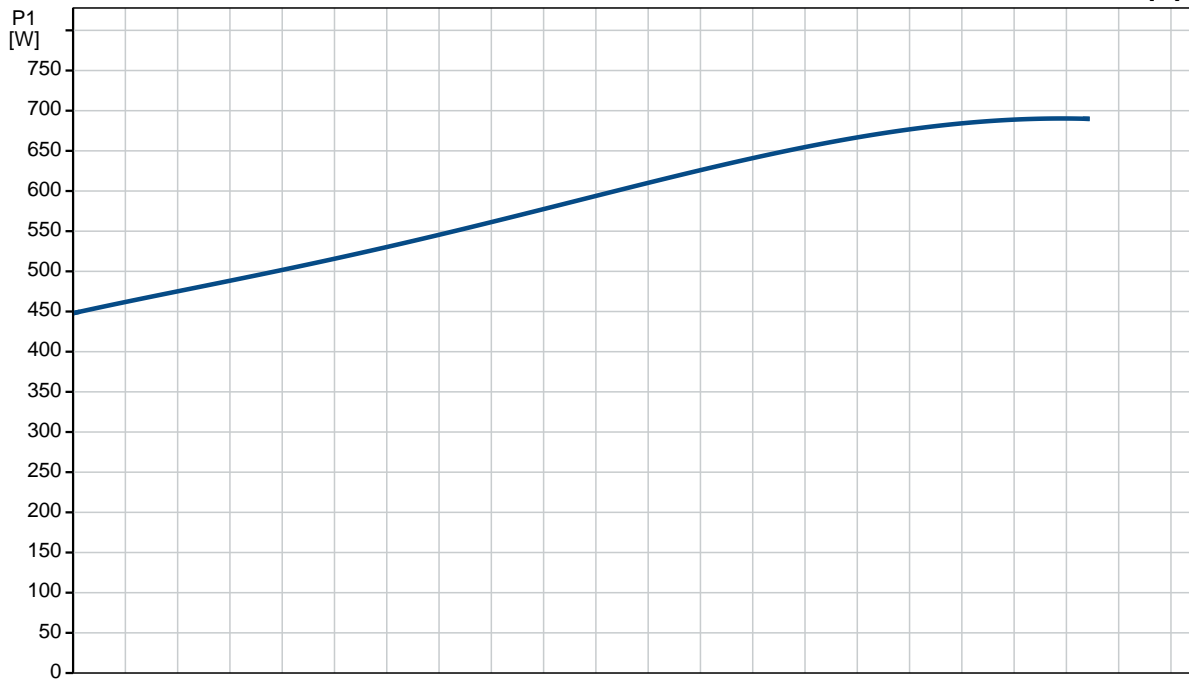
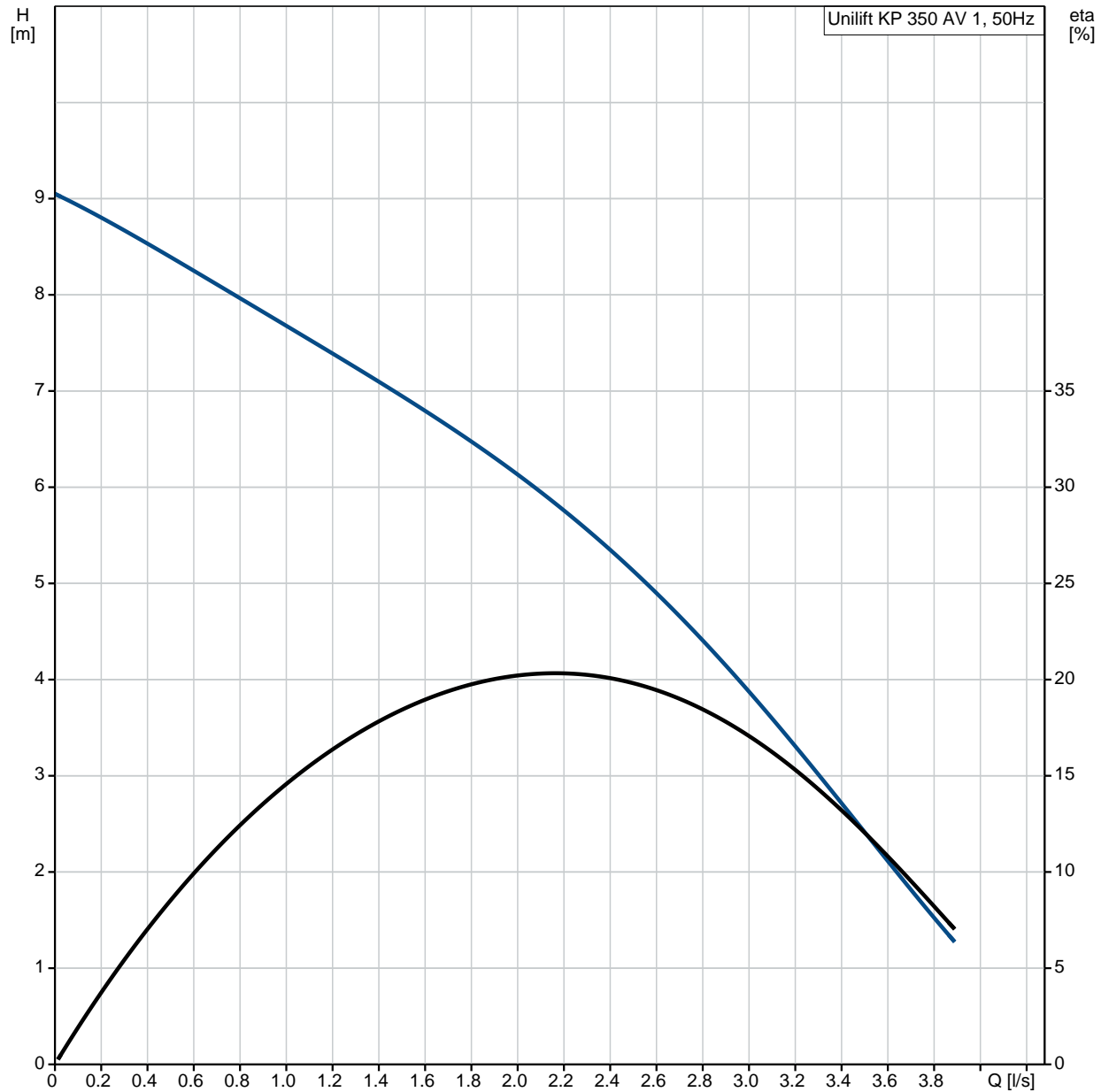


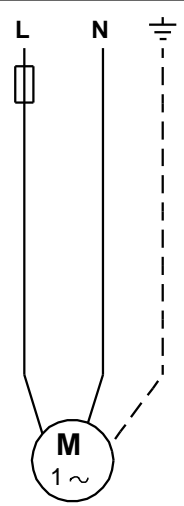
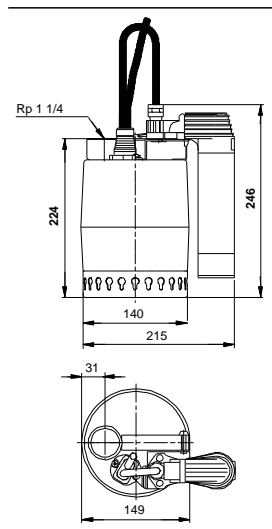
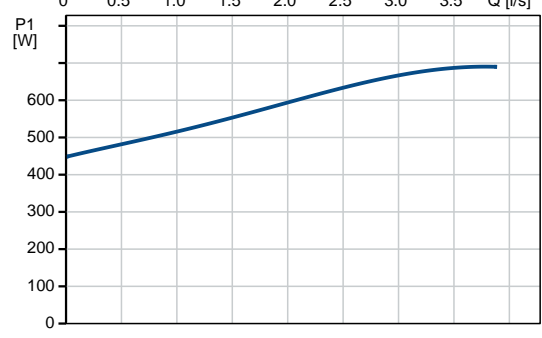
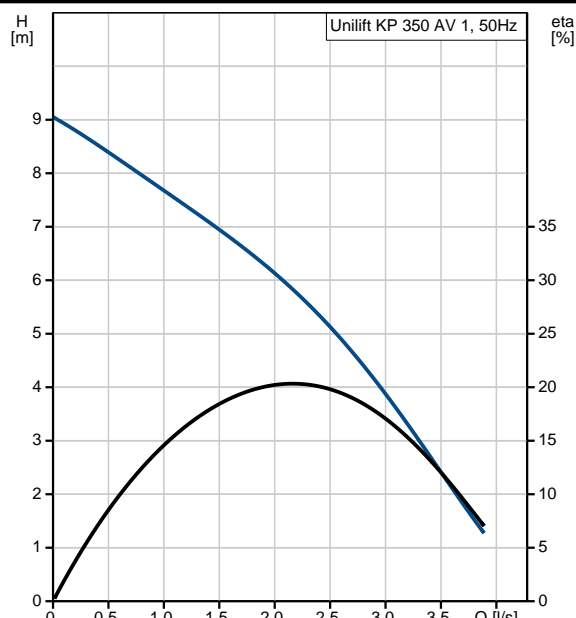
Position	Qty.	Description																				
	1	<p><b>Unilift KP 350 AV 1</b></p>  <p style="text-align: right;"><b>Note! Product picture may differ from actual product</b></p> <p>Product No.: <a href="#">013N1900</a> Submersible drainage pump</p> <p>Vertical single-stage stainless steel submersible pump with vertical discharge port and integrated submersible 1-phase canned motor in insulation class F with thermal overload protection.</p> <p>The pump is fitted with suction strainer and a carrying handle and is supplied with a 10 m mains cable and vertical level switch for automatic start and stop.</p> <p>The impeller is a semi-open impeller for 10 mm free passage suitable for pumping groundwater, surface water, rain water and similar liquids.</p> <p>The pump has a double shaft seal consisting of two lip seals with grease in-between.</p> <p>The pump has an outer casing ensuring continuous cooling of the motor by the pumped liquid. The rotor shaft operates in two maintenance-free carbon bearings cooled by the pumped liquid</p> <p>The motor is filled with a non-toxic motor liquid.</p> <p><b>Liquid:</b></p> <table> <tr> <td>Pumped liquid:</td> <td>Any Newtonian liquid</td> </tr> <tr> <td>Liquid temperature range:</td> <td>0 .. 50 °C</td> </tr> <tr> <td>Density:</td> <td>998.2 kg/m<sup>3</sup></td> </tr> </table> <p><b>Technical:</b></p> <table> <tr> <td>Maximum particle size:</td> <td>10 mm</td> </tr> </table> <p><b>Materials:</b></p> <table> <tr> <td>Pump housing:</td> <td>Stainless steel DIN W.-Nr. 1.4301 AISI 304</td> </tr> <tr> <td>Impeller:</td> <td>Stainless steel DIN W.-Nr. 1.4031 AISI 304</td> </tr> </table> <p><b>Installation:</b></p> <table> <tr> <td>Pump outlet:</td> <td>Rp 1 1/4</td> </tr> <tr> <td>Maximum installation depth:</td> <td>7 m</td> </tr> </table> <p><b>Electrical data:</b></p> <table> <tr> <td>Power input - P1:</td> <td>700 W</td> </tr> <tr> <td>Mains frequency:</td> <td>50 Hz</td> </tr> </table>	Pumped liquid:	Any Newtonian liquid	Liquid temperature range:	0 .. 50 °C	Density:	998.2 kg/m <sup>3</sup>	Maximum particle size:	10 mm	Pump housing:	Stainless steel DIN W.-Nr. 1.4301 AISI 304	Impeller:	Stainless steel DIN W.-Nr. 1.4031 AISI 304	Pump outlet:	Rp 1 1/4	Maximum installation depth:	7 m	Power input - P1:	700 W	Mains frequency:	50 Hz
Pumped liquid:	Any Newtonian liquid																					
Liquid temperature range:	0 .. 50 °C																					
Density:	998.2 kg/m <sup>3</sup>																					
Maximum particle size:	10 mm																					
Pump housing:	Stainless steel DIN W.-Nr. 1.4301 AISI 304																					
Impeller:	Stainless steel DIN W.-Nr. 1.4031 AISI 304																					
Pump outlet:	Rp 1 1/4																					
Maximum installation depth:	7 m																					
Power input - P1:	700 W																					
Mains frequency:	50 Hz																					

Position	Qty.	Description
		<p>Rated voltage: 1 x 220-240 V</p> <p>Rated current: 3.2 A</p> <p>Capacitor size - run: 10 µF/400 V</p> <p>Enclosure class (IEC 34-5): IP68</p> <p>Insulation class (IEC 85): F</p> <p>Length of cable: 10 m</p> <p>Type of cable plug: SCHUKO</p> <p><b>Others:</b></p> <p>Net weight: 8 kg</p> <p>Gross weight: 8.3 kg</p> <p>Shipping volume: 0.013 m³</p> <p>Country of origin: HU</p> <p>Custom tariff no.: 84137021</p>

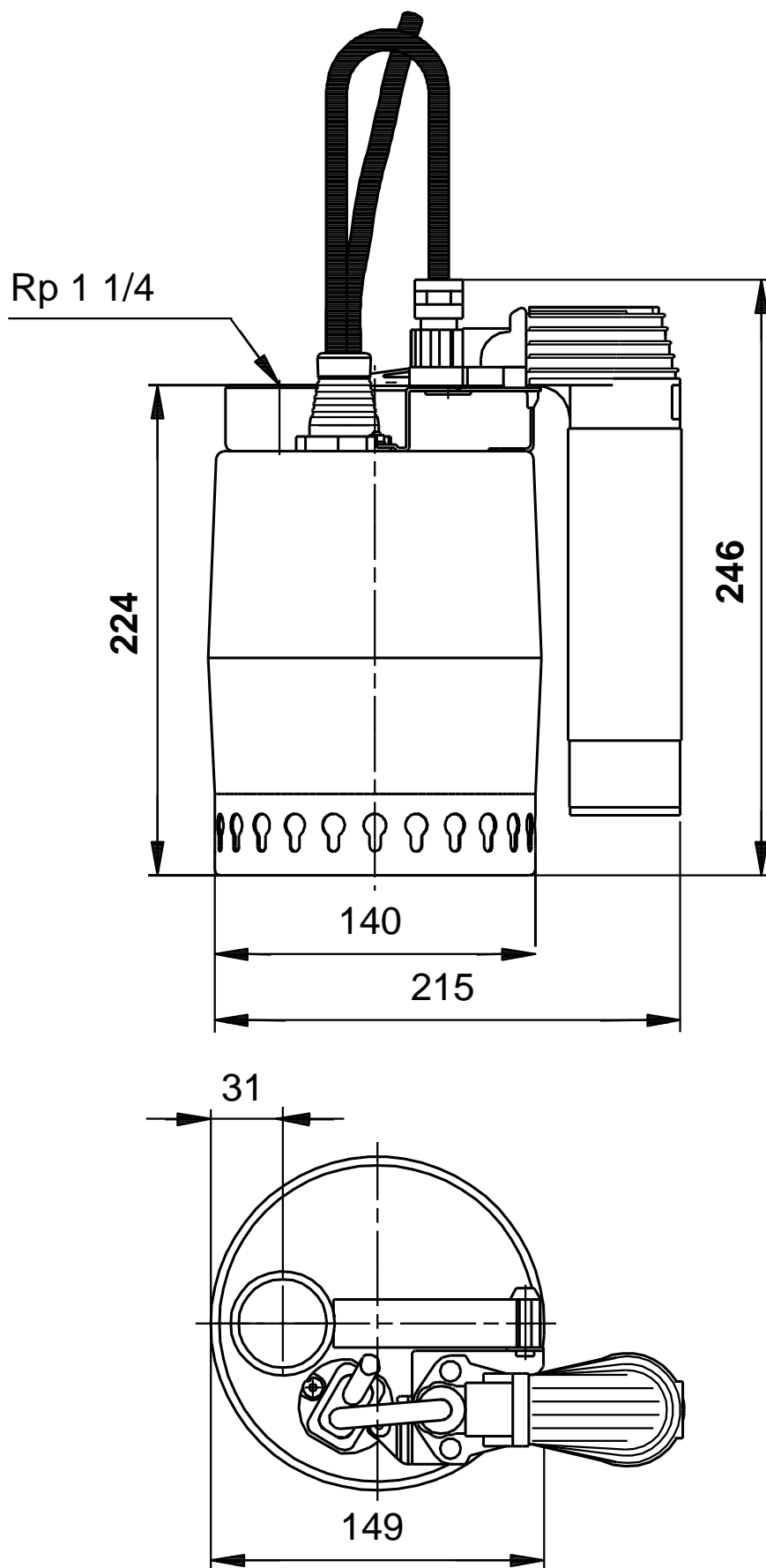
# 013N1900 Unilift KP 350 AV 1 50 Hz



Description	Value
<b>General information:</b>	
Product name:	Unilift KP 350 AV 1
Product No:	013N1900
EAN number:	5700393536548
<b>Technical:</b>	
Max flow:	3.89 l/s
Head max:	9 m
Maximum particle size:	10 mm
Model:	A
<b>Materials:</b>	
Pump housing:	Stainless steel
	DIN W.-Nr. 1.4301
	AISI 304
Impeller:	Stainless steel
	DIN W.-Nr. 1.4031
	AISI 304
<b>Installation:</b>	
Pump outlet:	Rp 1 1/4
Maximum installation depth:	7 m
<b>Liquid:</b>	
Pumped liquid:	Any Newtonian liquid
Liquid temperature range:	0 .. 50 °C
Density:	998.2 kg/m <sup>3</sup>
<b>Electrical data:</b>	
Power input - P1:	700 W
Mains frequency:	50 Hz
Rated voltage:	1 x 220-240 V
Rated current:	3.2 A
Capacitor size - run:	10 µF/400 V
Enclosure class (IEC 34-5):	IP68
Insulation class (IEC 85):	F
Motor protec:	CONTACT
Thermal protec:	internal
Length of cable:	10 m
Type of cable plug:	SCHUKO
<b>Controls:</b>	
Level switch:	vertical level switch
<b>Others:</b>	
Net weight:	8 kg
Gross weight:	8.3 kg
Shipping volume:	0.013 m <sup>3</sup>
Country of origin:	HU
Custom tariff no.:	84137021

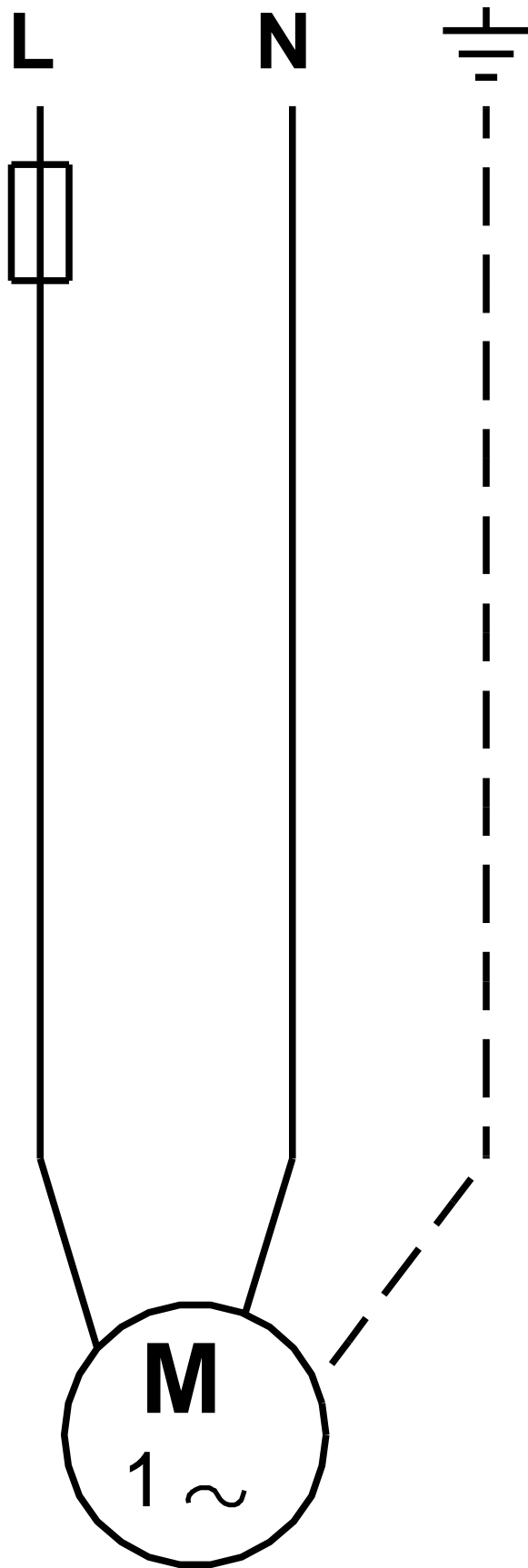


# 013N1900 Unilift KP 350 AV 1 50 Hz



Note! All units are in [mm] unless others are stated.  
Disclaimer: This simplified dimensional drawing does not show all details.

013N1900 Unilift KP 350 AV 1 50 Hz



Note! All units are in [mm] unless others are stated.